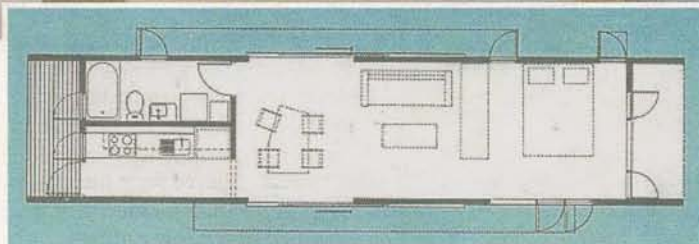


the back of a truck



Inside the Dhan: all lights, pelmets, painting, flooring, bathroom and kitchen fittings, plumbing and joinery are included — all quality-assured before leaving the factory — so all you need is a fridge and furniture and it's a home.



TAKE TRAUMA OUT OF BUILDING

Finding that kit fix

KENTUCKY Napier at Bayswater claims the title of Victoria's longest-running kit and modular homes business.

"We started in 1974 with Dad (Don Napier) providing kit homes for owner-builders and in the mid-'80s went into factory-built housing," general manager Mike Napier says.

"Since then we've gone into two-storey houses and fold-down houses and we've spawned quite an industry around here.

"We send them anywhere from Melbourne to Mallacoota and Mildura and everywhere in between."

Kentucky Napier offers five single-storey and six double-storey designs — some with up to four size variations.

They range from the \$134,400 two-bedroom, 9.95q ranch-style Barwon 100 to the \$286,440 four-bedroom, 21.45q contemporary Pavilion 210, which last year won the manufactured/kit housing category in the HIA Top Homes Awards.

"The Pavilion is a modulated



Winner: the Pavilion 210.

two-storey home that breaks into six modules," Napier says.

"The Pavilion is probably our most striking home. Everybody loves it but not everybody buys it."

All Kentucky Napier's homes are built behind their display village at 890 Mountain Highway, Bayswater, so Victorian clients can call in to watch their home taking shape.

"People love the idea of being able to see the thing under construction," Napier says.

"Building is a very traumatic experience for all parties, so it's about reducing that trauma for everyone. Neighbours aren't disturbed and there's no worry about pilfering from your site."